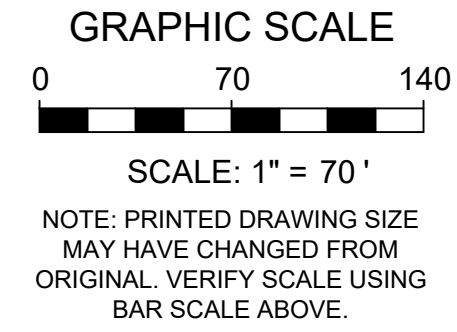



PZ25-12000030  
11/19/2025



**GRAPHIC SCALE**

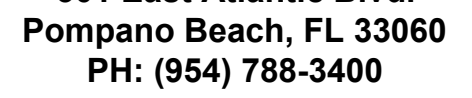
0 70 140



A horizontal scale bar with alternating black and white segments. The total length is 140 feet, with a midpoint at 70 feet. The bar is divided into 14 equal segments, each representing 10 feet. The first 7 segments (0 to 70 feet) are black, and the next 7 segments (70 to 140 feet) are white.

**SCALE: 1" = 70'**

**NOTE: PRINTED DRAWING SIZE  
MAY HAVE CHANGED FROM  
ORIGINAL. VERIFY SCALE USING  
BAR SCALE ABOVE.**



**Pompano Beach, FL 33060**  
**PH: (954) 788-3400**

Florida Engineering Business License: CA7928  
Florida Surveyor and Mapper Business License: LB6860  
Florida Landscape Architecture Business License: LC26000457

[illegible]

**RESPONSIBILITY FOR THE USE OF THESE  
PLANS PRIOR TO OBTAINING PERMITS FROM  
ALL AGENCIES HAVING JURISDICTION OVER  
THE PROJECT WILL FALL SOLELY UPON THE  
USER.**

ISSUE DATE:	10/15/2025
-------------	------------

DESIGNED BY: BB

DRAWN BY: JS

CHECKED BY: NW

BID-CONTRACT:

**THOMAS F. DONAHUE, P.E.**  
**FLORIDA REG. NO. 60529**  
**(FOR THE FIRM)**

**CLIENT**

**FIRST  
INDUSTRIAL**

PROJECT

**FIRST 95 DISTRIBUTION  
CENTER- PHASE II  
1000-1041 NW 12th Ter.  
Pompano Beach, FL**

SHEET TITLE

## PAVING, GRADING, AND DRAINAGE OVERALL PLAN

**SHEET**  
**NUMBER** **CP-100**

PROJECT NUMBER	10607.14
-------------------	----------

NOTE:  
ELEVATIONS SHOWN HEREON ARE IN FEET AND  
BASED ON THE NORTH AMERICAN VERTICAL DATUM  
OF 1988 (NAVD 88). BASED ON THE SURVEY  
PREPARED BY KEITH AND ASSOCIATES, INC.

**STATUS: PRELIMINARY**